

# JOURNEY TO SUCCESS

Turn your board game into the CCAR Professional Development and Education Department within one year and be entered to win a FREE GRI class (\$275 value).

NAME: \_\_\_\_\_

LICENSE # \_\_\_\_\_

1. Fill out a member application online



2. Receive a call to schedule your new member sign-up session



3. Complete your new member sign-up session and pay mandatory REALTOR® dues



4. NTREIS Rules & Regulations  
Complete video and course exit survey.



WOO HOO!  
You can search  
for homes!



5. Learn more about CCAR



6. Pick your preferred path to complete Code of Ethics



Virtual



In Person



7. Login to your *ccar.net* dashboard  
Update your information to make sure you are featured on *lonestarihomes.com*



8. Attend a committee meeting



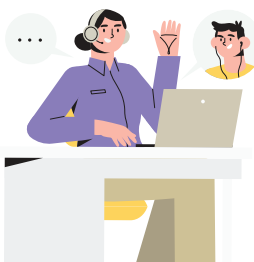
9. Send your Broker a "Thank You" note



10. Learn about TREPAC



11. Take advantage of your membership benefits



12. SAE Time



Contributions to the Texas REALTORS® Political Action Committee (TREPAC) and the Texas Association of REALTORS® Federal Political Action Committee (TAR FedPAC)—which makes contributions to the REALTORS® Political Action Committee (RPAC)—are not tax deductible. Such contributions are voluntary and may be used for political purposes. The amount indicated is merely a guideline, and you may contribute more or less than the suggested amount. You may refuse to contribute without reprisal, and the NATIONAL ASSOCIATION OF REALTORS®, Texas REALTORS®, and its local associations will not favor or disadvantage anyone because of the amount contributed. Until the RPAC annual goal is met, 70% of an individual's contribution goes to TREPAC and may be used to support state and local candidates; the remaining 30% is sent to TAR FedPAC to support federal candidates and is charged against your limits under 52 U.S.C. 30116. After the RPAC annual goal is met, 100% of an individual's contribution goes to TREPAC and may be used to support state and local candidates. You may contact the Texas REALTORS® political committee administrator at 800-873-9155 to obtain information about your contributions.